

**DRAFT**

# ANTIPATHARIANS

## of Deepwater Communities in the Northwestern Gulf of Mexico

Developed by Flower Garden Banks National Marine Sanctuary  
Emma L. Hickerson and G.P. Schmahl

Collaborators: Dennis Opresko (Smithsonian Institute), Mary Wicksten (Texas A&M University), Kyle Byers and Douglas C. Weaver (NOAA/FGBNMS), Steve Cairns (Smithsonian Institute), Lance Horn, (National Undersea Research Center/University of North Carolina at Wilmington)

February, 2007

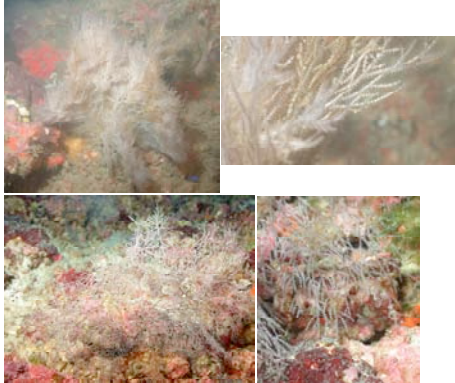


Phylum Cnidaria  
Class Anthozoa  
Order Antipatharia  
Family Antipathidae

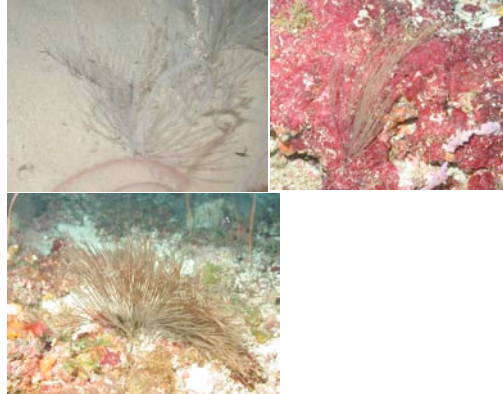
*Antipathes atlantica*



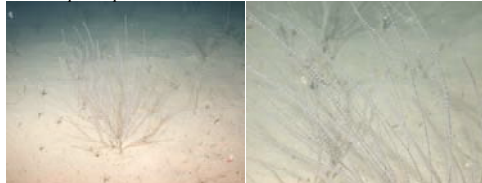
Possible ecological variant of *A. atlantica*



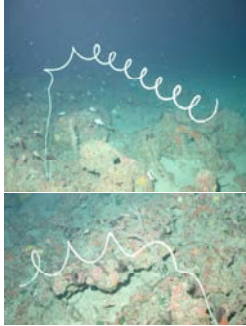
*Antipathes furcata*



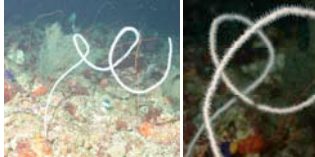
*Antipathes sp.*



*Stichopathes sp.*



*Stichopathes lutkeni*

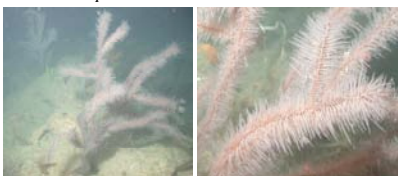


Family Myriopathidae

*Tanacetipathes sp.*



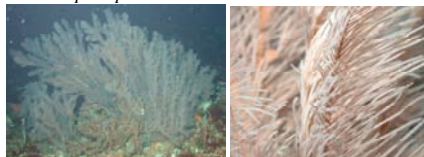
*Tanacetipathes barbadensis*



*Tanacetipathes tanacetum*

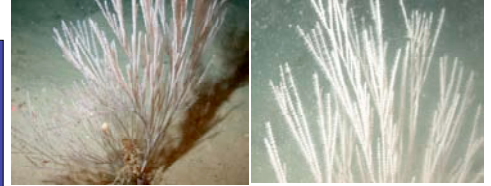


*Plumapathes pennacea*

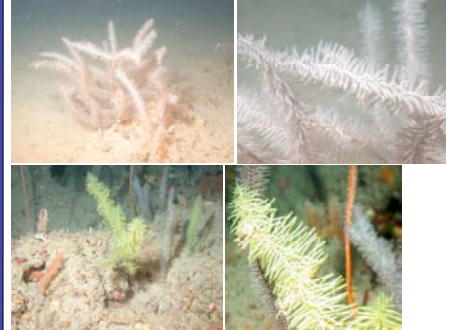


Family Aphanipathidae

*Aphanipathes pedata*



*Elatopathes abietina*



*Phanopathes expansa*



*Acanthopathes thyoidea*



The majority of the antipatharians pictured were sampled at the Flower Garden Banks National Marine Sanctuary by remotely operated vehicle at depths between 158 feet and 431 feet.